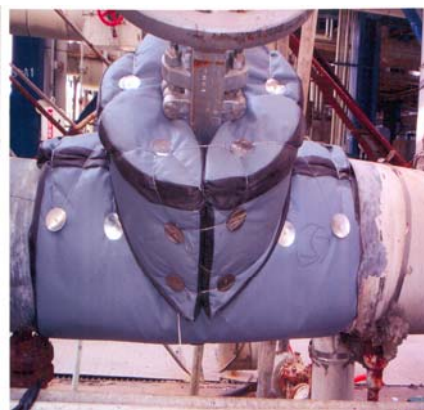


IN-Fluo 鐵氟龍塗佈玻纖布系列

- 基材: KM600 系耐高溫布
表面: PTFE (鐵氟龍) COATING
耐溫: 287°C
特性: 抗化學品, 具彈性及氣密性,
耐油水, 耐候, 防沾黏,
潔淨表面, 防火
應用範圍: 膨脹接頭, 防震接頭, 保溫夾克,
伸縮蛇管, 無塵室保溫



IN-Fluo PTFE/Fiberglass Cloth

This series of PTFE coated/impregnated fiberglass fabric are designed for use in removable blankets as weather/chemical resistant barrier. This economic grade fabric is easily sewn and is flexible enough to conform to intricate shapes. The PTFE coating is extremely resistant to most industrial chemicals and has been in applications to 287°C.

Advantages:

- Flame Resistant,
- Excellent chemical, oil, and weather resistant,
- Suitable for clean room applications

Data and Availability

產品 Product ID	厚度 Thickness (mm)	單位面積重 Areal Weight (g/m ²)	張力強度 Tensile Strength (N/50mm)	每捲呎吋 Roll sizes (m)
3-43P/P	0.3	425	2670x2220	1.5x45.7
4-56P/P	0.43	560	3660x3170	1.5x45.7
4-61P/P	0.46	610	3660x3170	1.5x45.7
9-115P/P	0.86	1153	5400x4600	1.5x45.7

Your solution for Thermal Insulation since 1989 !